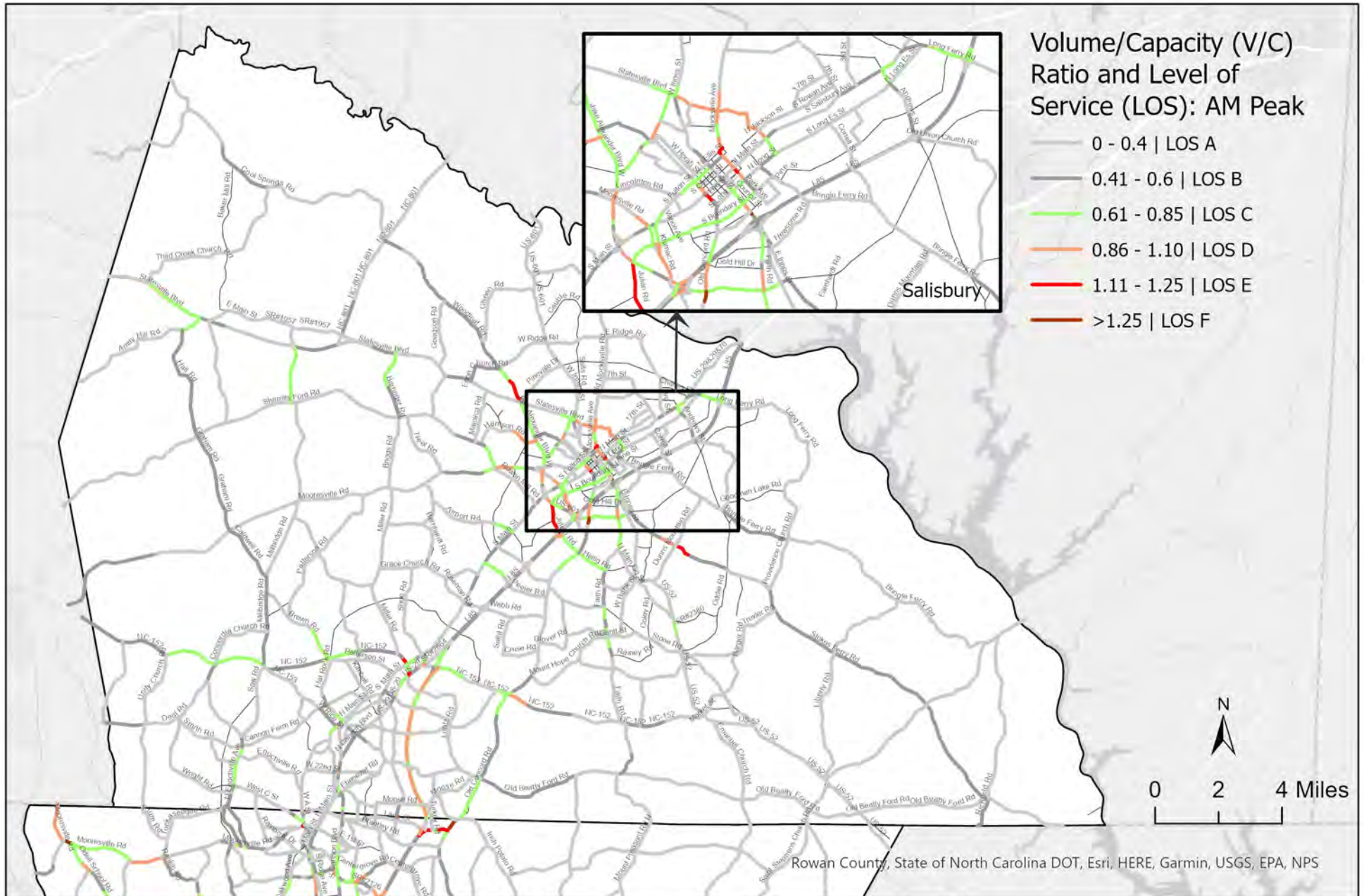


# V/C Ratio and LOS - AM Peak Period

Base Year (2018) Model Estimates

Rowan County

Data Source: MRM2002, Jan 2022 Release

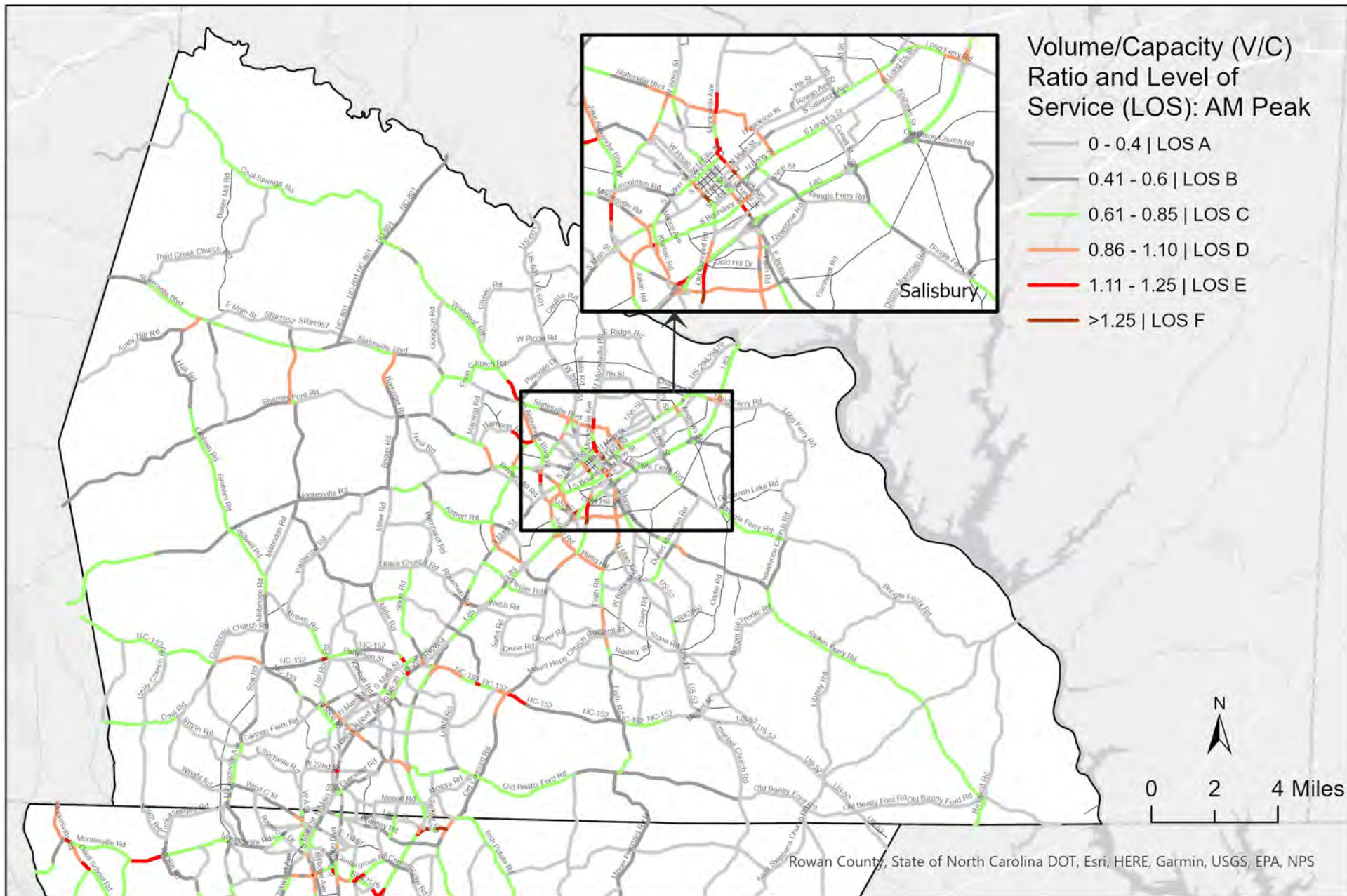


# V/C Ratio and LOS - AM Peak Period

## 2050 MTP Funded Scenario

Rowan County

Data Source: MRM2002, Jan 2022 Release

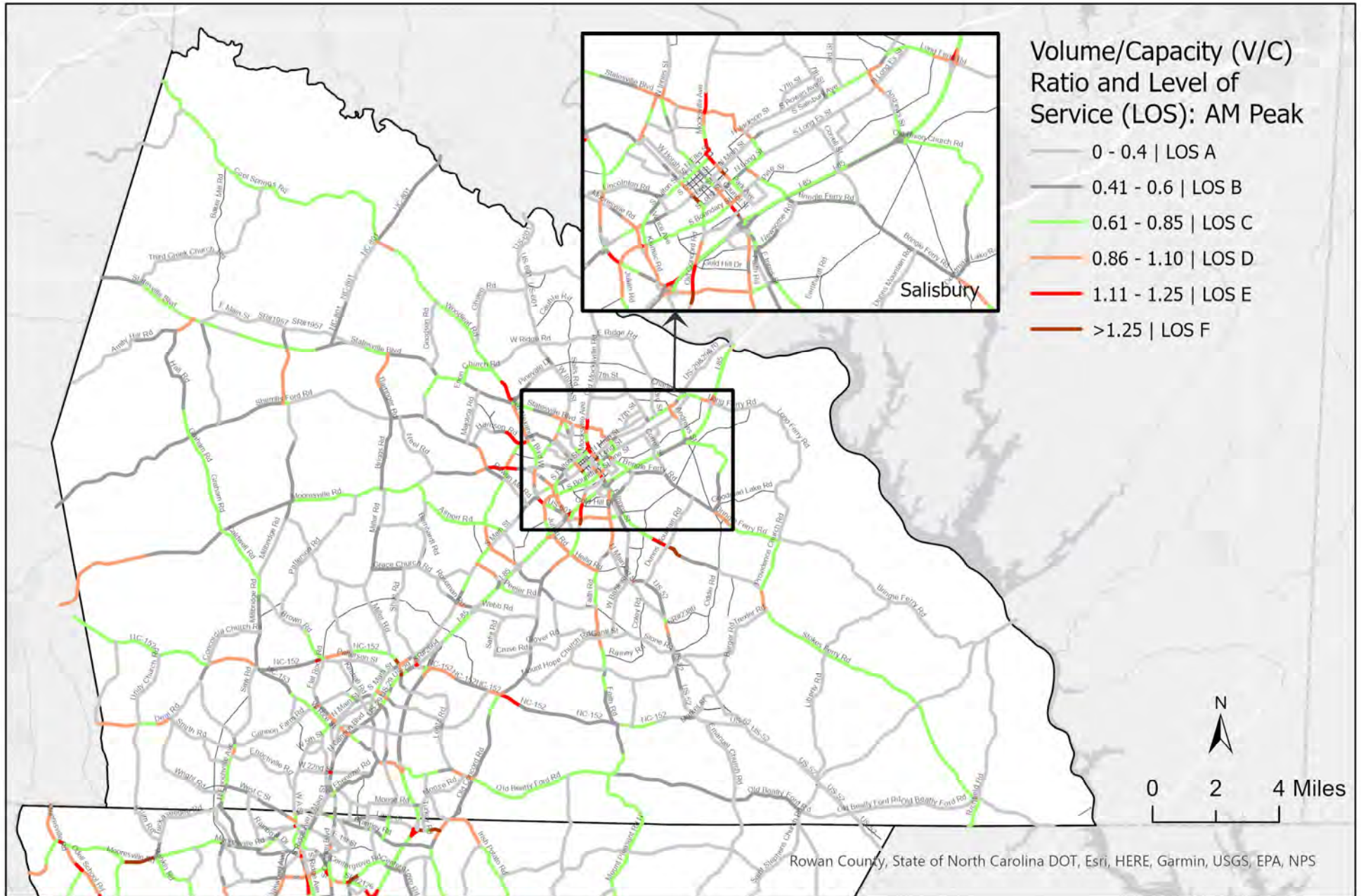


# V/C Ratio and LOS - AM Peak Period

## 2050 E+C Funded Scenario

Rowan County

Data Source: MRM2002, Jan 2022 Release

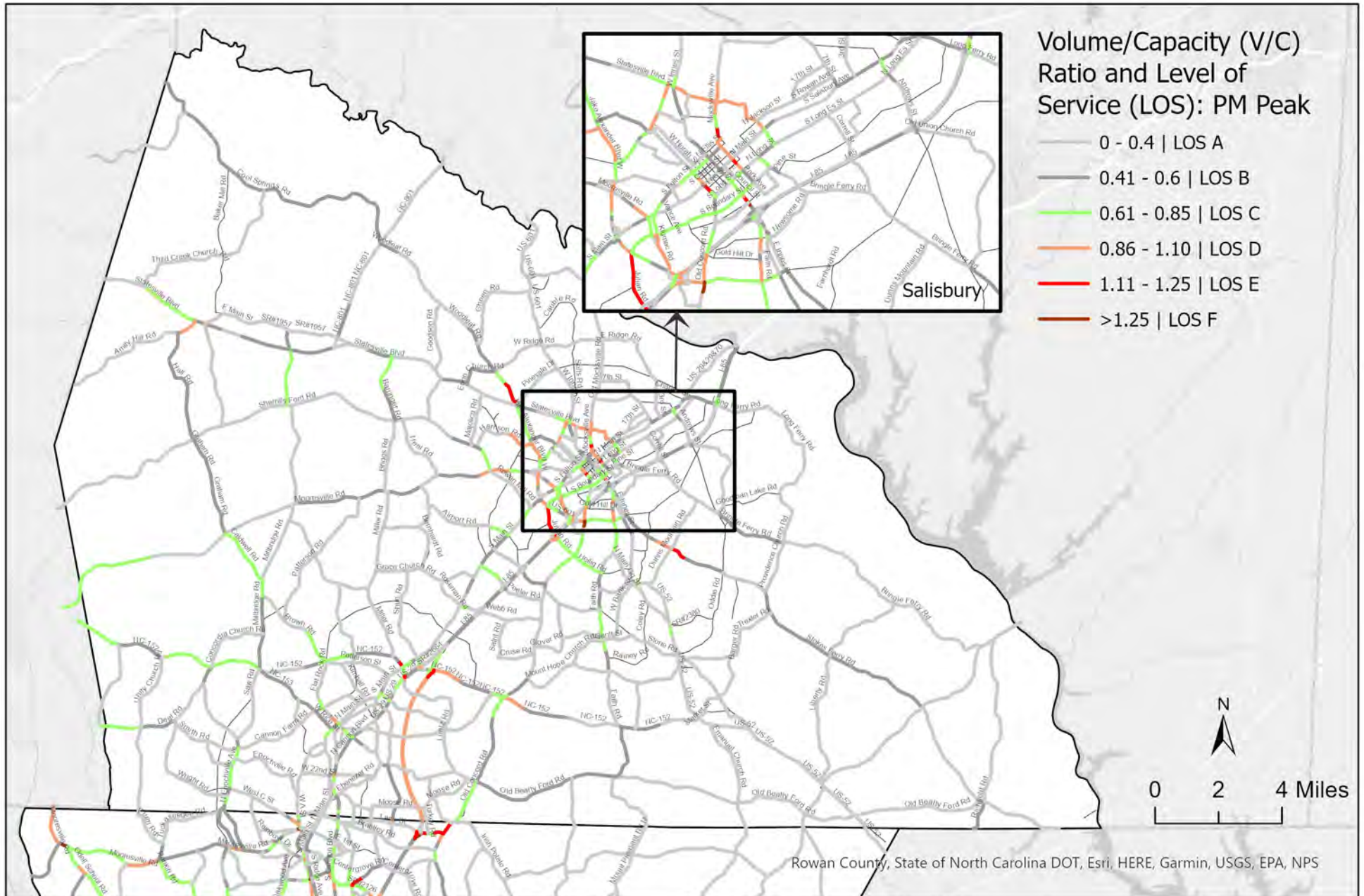


# V/C Ratio and LOS - PM Peak Period

Base Year (2018) Model Estimates

Rowan County

Data Source: MRM2002, Jan 2022 Release

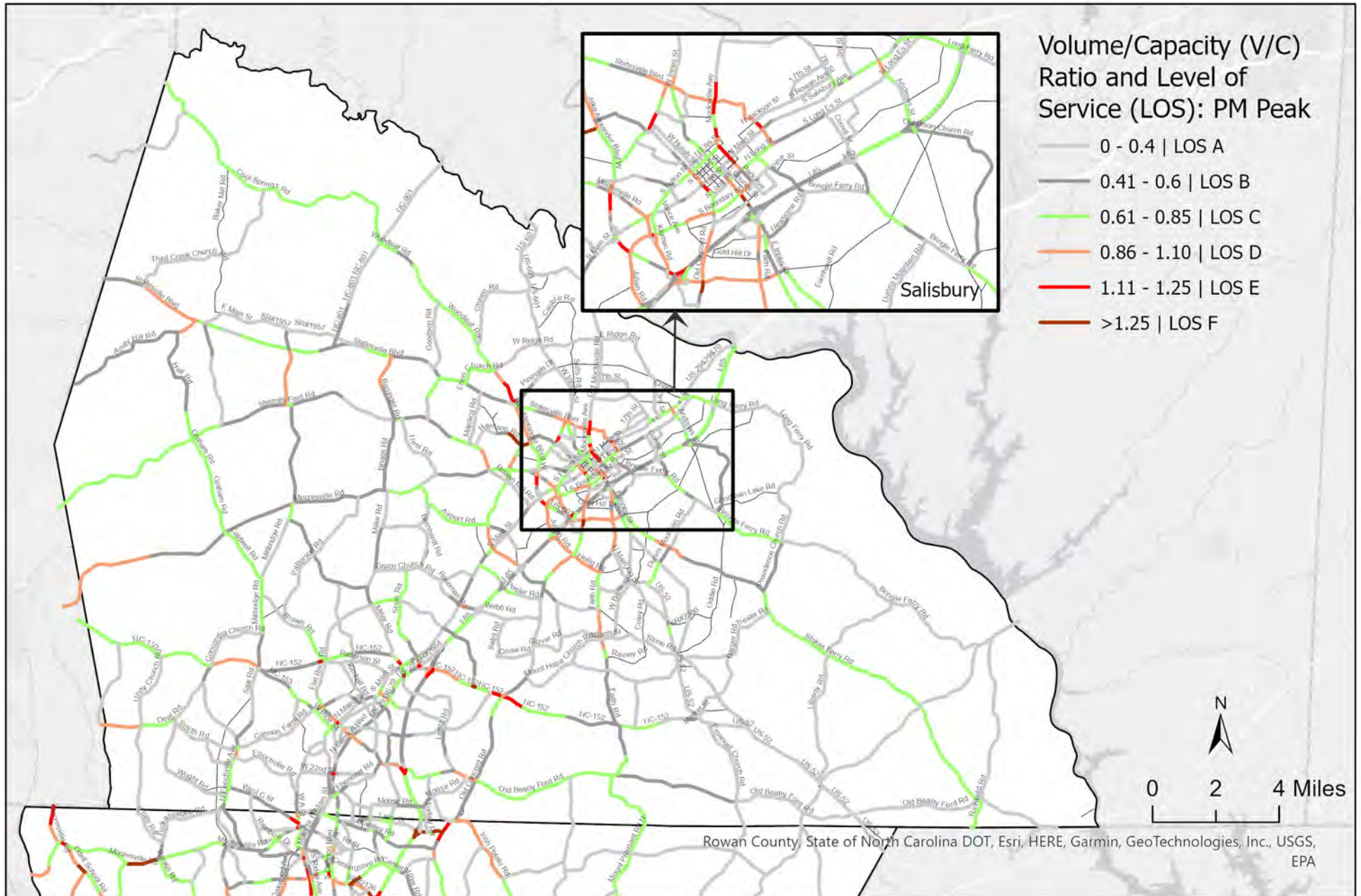


# V/C Ratio and LOS - PM Peak Period

## 2050 MTP Funded Scenario

Rowan County

Data Source: MRM2002, Jan 2022 Release



# V/C Ratio and LOS - PM Peak Period

## 2050 E+C Funded Scenario

Rowan County

Data Source: MRM2002, Jan 2022 Release

